

MONTHLY MEMBERSHIP PROGRESS REPORT

District 27 D1

Results as of: 5/31/2026

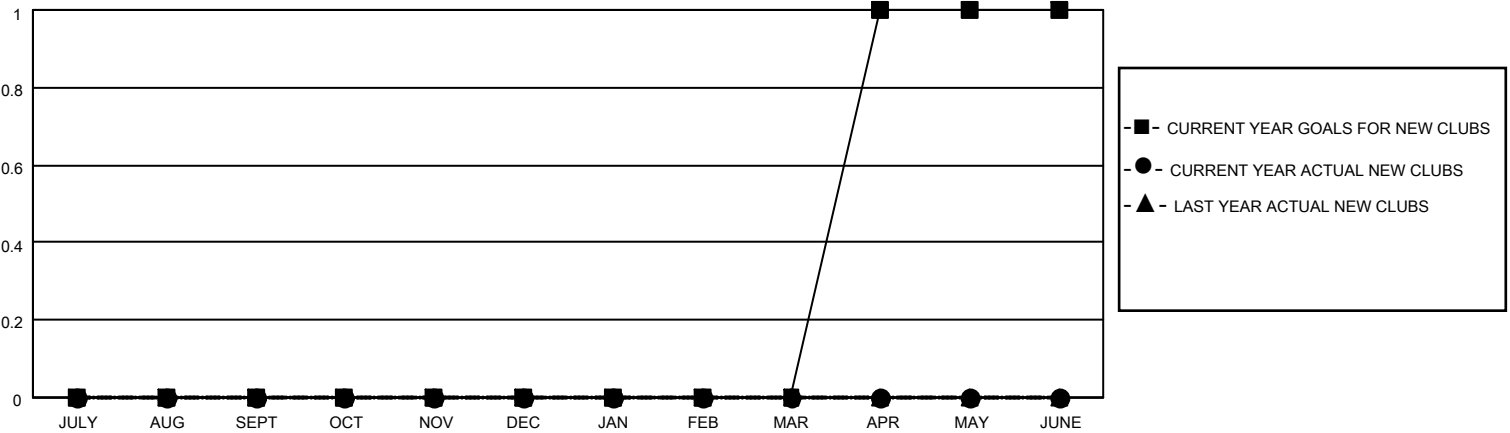
GMT:

LOCATION WISCONSIN

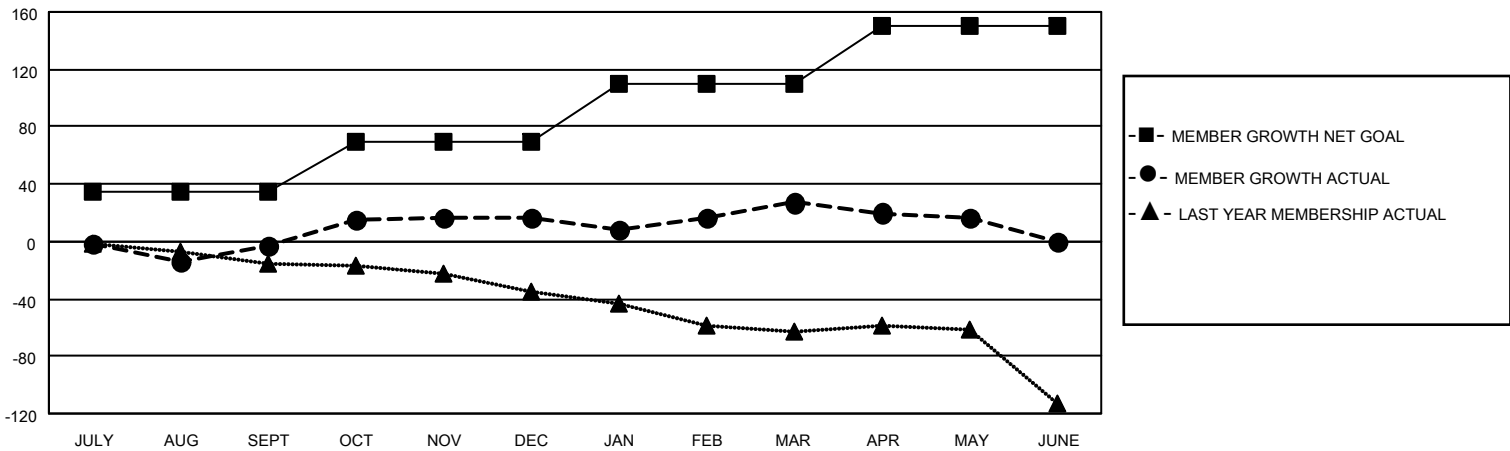
GMT CA

| Clubs | | | | Members | | | |
|-----------------------|---------------|-----------|---------------|-----------------------|------------------------|----------------------|--|
| RESULTS FOR 2025-2026 | | | | RESULTS FOR 2025-2026 | | | |
| QUARTER | NEW CLUB GOAL | NEW CLUBS | DROPPED CLUBS | QUARTER | MEMBER GROWTH NET GOAL | MEMBER GROWTH ACTUAL | DROPPED MEMBERS ACTUAL (including transfers) |
| JULY/AUG/SEPT | 0 | 0 | 0 | JULY/AUG/SEPT | 35 | 70 | 48 |
| OCT/NOV/DEC | 0 | 0 | 0 | OCT/NOV/DEC | 35 | 49 | 26 |
| JAN/FEB/MAR | 0 | 0 | 0 | JAN/FEB/MAR | 40 | 56 | 46 |
| APR/MAY/JUNE | 1 | 0 | 0 | APR/MAY/JUNE | 40 | 14 | 22 |

GOALS AND ACTUAL NEW CLUBS CUMULATIVE



GOALS AND ACTUAL MEMBERS CUMULATIVE



| | | |
|---|---|--|
| DROPPED CLUBS: 0 | 44 CLUBS OF 57 ADDED 1 OR MORE NEW MEMBERS | GENDER DISTRIBUTION MALE 1,350 (66.11%) FEMALE 692 (33.89%) |
| DROPPED MEMBERS DECEASED 30 CLUB CANCELLED 0 OTHER 112 TOTAL 142 | CLICK HERE FOR CUMULATIVE MEMBERSHIP DATA | TOTAL FAMILY UNIT MEMBERS 473 FAMILY MEMBERS PAYING HALF DUES 240 |